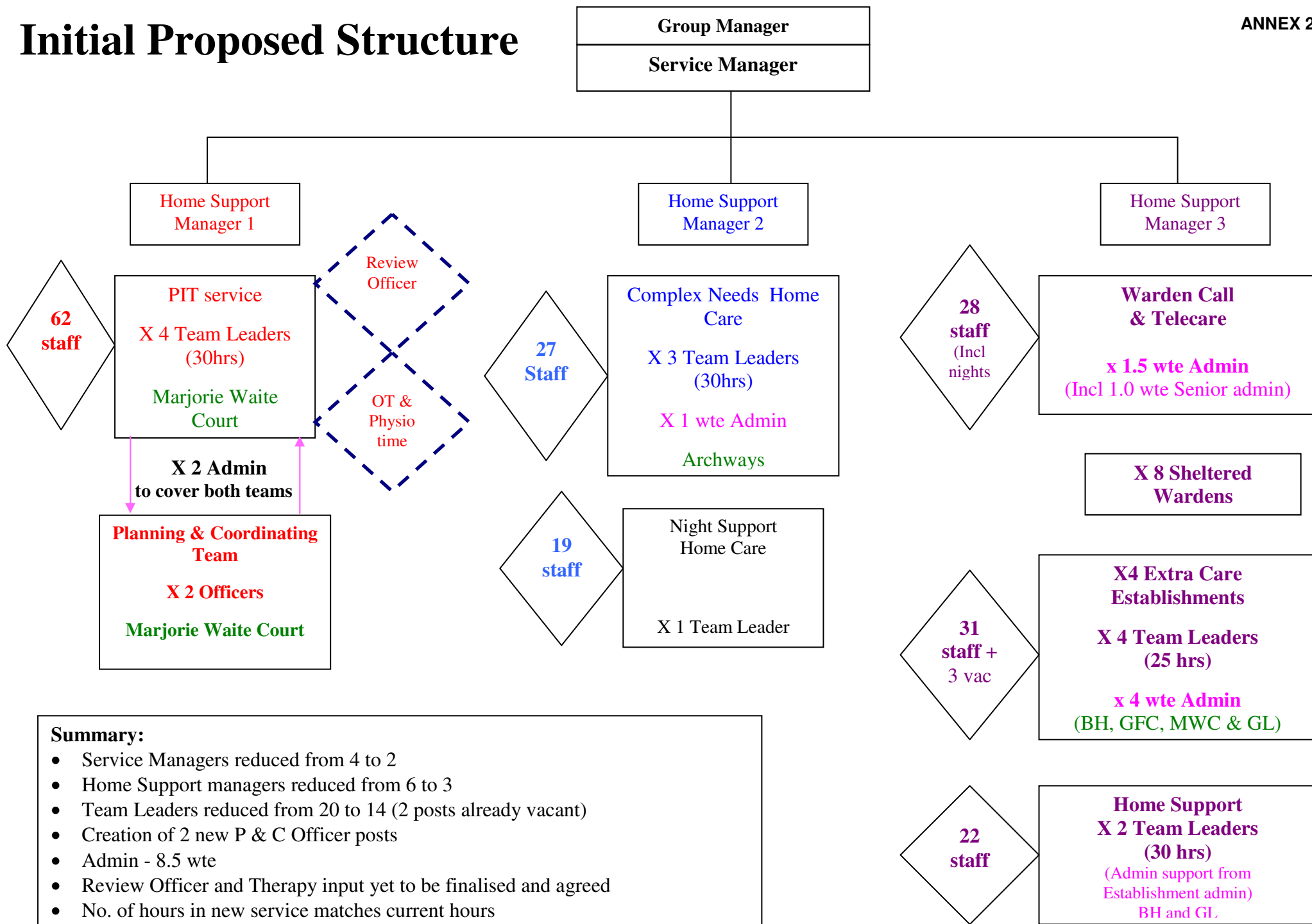


# Initial Proposed Structure



**Summary:**

- Service Managers reduced from 4 to 2
- Home Support managers reduced from 6 to 3
- Team Leaders reduced from 20 to 14 (2 posts already vacant)
- Creation of 2 new P & C Officer posts
- Admin - 8.5 wte
- Review Officer and Therapy input yet to be finalised and agreed
- No. of hours in new service matches current hours